

When versatility is vital

2000 series

Versatile, really robust and definitely mobile. Broad demands like these require reliable pumps that easily adapt to various working conditions.

The Flygt 2000 submersible pumps stand up to any type of job in virtually any position – rightside up, upside down, sideways or angled.

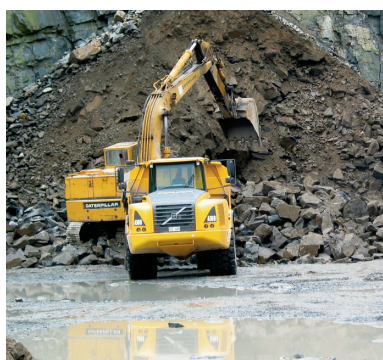
These wear-resistant pumps handle chemically aggressive, mechanically abrasive or highly viscous fluids laden with particles. On top of all that, they're safe for dry running and snoring operation.

When you need a good all-around player, you'll find that the Flygt 2000 series plays hard.



#### Municipal uses

A mobile multipurpose pump, the 2000 series goes to work at local utility and telecom construction sites and are ideal for emergency drainage.



#### Industrial uses

The Flygt 2000 series handles a wide range of industrial tasks including sprinkling, irrigation, drainage, dewatering and pumping of wastewater, spray water, rainwater, cooling water, seawater, foul water and muddy water.

#### Mining

Perfect for large mining projects, such as iron ore, gold, coal and minerals, the 2000 series works efficiently for tough drainage and dewatering tasks.

#### Construction and tunneling

Large infrastructure projects, including building roads, railways and airports, are typical examples of environments for the 2000 series. These pumps are also well suited to small to medium-sized construction projects, such as building power stations or dams.

## Large drainage pumps for tough environments

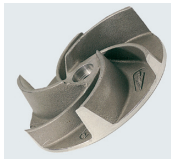
With capacities of up to 300 l/s, Flygt 2000 series handles big jobs with extreme efficiency.

Eight pumps are available in two casing materials: lightweight aluminium for heavy construction sites and mines and durable cast iron for corrosive environments.

These highly efficient, low maintenance pumps are exactly what you need to deal with large jobs that require flexible dewatering solutions.

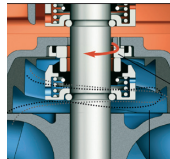


### Characteristics/benefits



#### Specially designed impellers

Manufactured in hardened cast iron, Flygt impellers are specially hardened to HRC 60 to ensure excellent wear-resistance, long service life and lower maintenance costs.



#### Spin-Out™

Unique to ITT Flygt, this patented design protects the outer seal and extends the service life by expelling abrasive particles from the seal.



#### Double axial face seals

Made of WCCR (corrosion resistant cemented carbide), these specially designed face seals protect the pumps against the ingress of liquids.

### Technical data

Protection category: IP 68,  
Maximum temperature: 40°C

#### Material according to DIN: Aluminium

##### 2071.010

Impeller..... Hardened steel  
Stator casing..... Aluminium  
Strainer..... Cast iron  
Shaft..... Stainless steel

##### 2125.181

Impeller..... Hard iron  
Stator casing..... Aluminium  
Strainer..... Galvanised steel  
Shaft..... Stainless steel

##### 2201.011

Impeller..... Hard iron  
Stator casing..... Aluminium  
Strainer..... Galvanised steel  
Shaft..... Stainless steel

##### 2250.011

Impeller..... Hard iron  
Stator casing..... Aluminium  
Strainer..... Galvanised steel  
Shaft..... Stainless steel

#### Material according to DIN:

##### Cast iron

All cast iron pumps are also available as explosion proof, EEx DI and EExDII.

##### 2075.324

Impeller..... Hardened steel  
Stator casing..... Cast iron  
Strainer..... Galvanised steel  
Shaft..... Stainless steel

##### 2201.320

Impeller..... Hard iron  
Stator casing..... Cast iron  
Strainer..... Galvanised steel  
Shaft..... Stainless steel

##### 2125.320

Impeller..... Hard iron  
Stator casing..... Cast iron  
Strainer..... Galvanised steel  
Shaft..... Stainless steel

##### 2400.402

Impeller..... Hard iron  
Stator casing..... Cast iron  
Strainer..... Galvanised steel  
Shaft..... Stainless steel